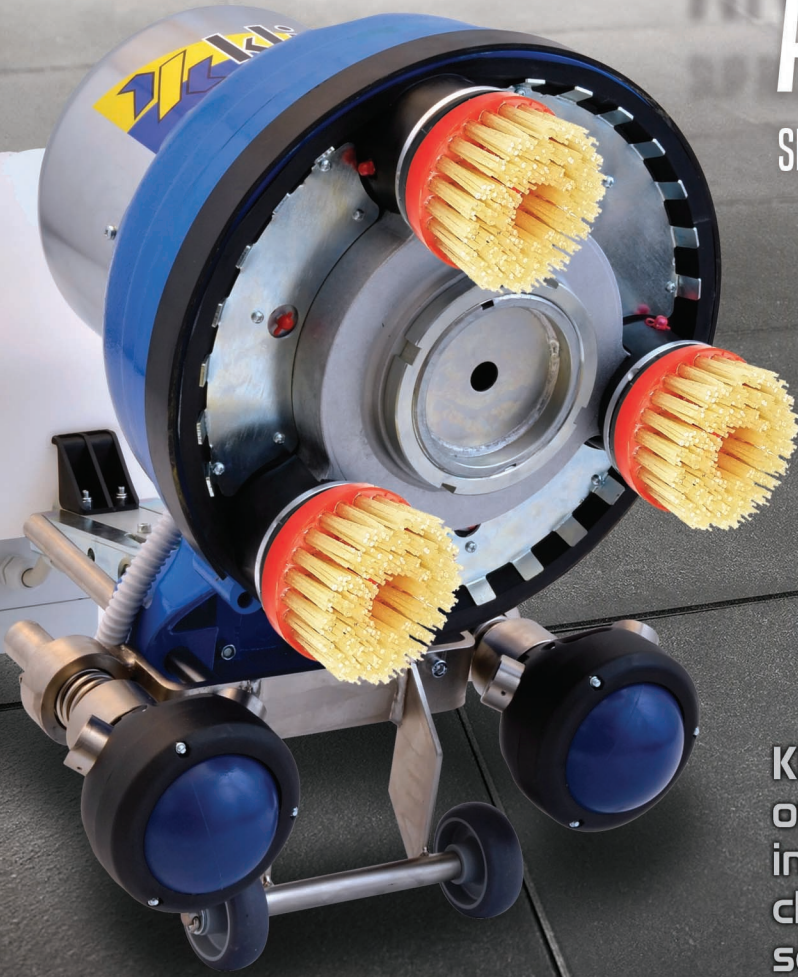


# ANTIKE FLOORING

SLIP RESISTANT TREATMENT SYSTEM FROM KLINDEX



Klindex introduces the newest way of slip resistant treating floors in-situ without the need for harsh chemicals or highly problematic sealers; The **ANTIKE** diamond brush system.

## BENEFITS OF USING ANTIKE

Perfect for external areas, wet areas or those requiring low slip rating; The **ANTIKE** diamond brush system has the following benefits.

- ✓ **Environmentally friendly** - uses water only
- ✓ **Economic** - Low material cost, easy process
- ✓ **Fast** - 1-2 passes with the machine creates the slip resistant surface
- ✓ **Consistent finish** - Not patchy and uneven like most acid treatments
- ✓ **Permanent** - Doesn't break down and become slippery again like sealers



# ANTIKE FLOORING SYSTEM



## Antike Brushes

Convert your slippery floor into an anti-slip floor in an easy and safe way

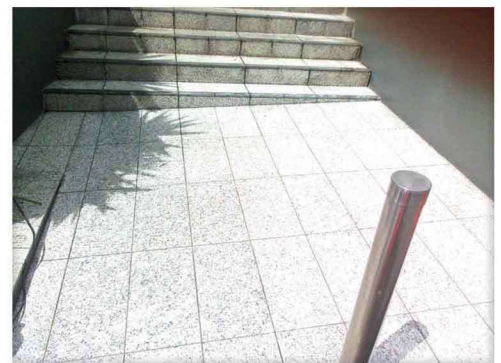
### What are they?

**Antike brushes** feature a diamond grit fused into a brush based filament to allow the brushes to 'machine' a smooth and polished surface that is slippery into an antislip flooring in an easy and non hazardous way. These brushes are available in 30, 70 and 120 grits and can work on nearly all types of stone, concrete and timber flooring.



### How does it work?

The diamond brushes are fitted underneath a machine to mechanically wear out the softer parts of the stone and leave the harder part of the stone proud of the surface, creating microscopic undulations in the floor which generates significant antislip.



# PREVENT SLIP FALL ACCIDENTS

How much slip resistant do you want your floor?



- P5** External ramps, Loading docks, Swimming pool ramps and stairs

---

- P4** External colonnade and walkway, Pedestrian crossings, driveways, Verandahs, Balconies, cold stores, Swimming pool surrounds

---

- P3** Shopping centre, fresh food areas, Entries & access areas, Bathrooms and toilets in hospitals and aged care facilities

---

- P2** Entries & access areas, Hotel bathrooms, ensuites and toilets, Hotel kitchens and laundries, Wards and Corridors in hospitals

---




- P1** Entries & access areas - Public buildings Dry Supermarket aisles

## Slip Testing & Indicative Results after Treating Tiles with the Klindex Antike System

Recently we invited **Mr Mark McKay** from **Slip Test NSW** to test a variety of flooring that we treated with the Klindex Antike System. Indicative test results were taken for the flooring that was treated and should prove as a guide on what can be expected. Results may differ due to density of stone and technique used by the operator.

Sample Description	Tested as supplied		
	Average of last 3 swings SRV	Theoretical class as per AS 4586:2013	Theoretical class as per AS 4586:2004
Antike 70 grit Process on Granite	40	P3	X
Antike 120 grit Process on Marble	37	P3	X
Antike 30 grit Process on Travertine	47	P4	W
Antike 30 grit Process on Concrete	60	P5	V
Antike 30 grit Process on Terrazzo	58	P5	V

Sliptest NSW has performed these test with reference to the following Australian Standard testing criteria, of the standard as listed below, and HB 198: 2014

-  AS 4586:2013 Slip Resistance measurement of new pedestrian surfaces
-  Appendix A – Wet Pendulum Test Method
-  Testing performed using the Type 96 rubber slider material



# SLIP TESTING RESULTS ON POLISHED CONCRETE

Before

After

	Tested as supplied
Average of last 3 swings SRV	60
Theoretical class as per AS4586:2013	P5
Theoretical class as per AS4586:2004	V



# SLIP TESTING RESULTS ON GRANITE

Before

After

	Tested as supplied
Average of last 3 swings SRV	40
Theoretical class as per AS4586:2013	P3
Theoretical class as per AS4586:2004	X



# SLIP TESTING RESULTS ON MARBLE

Before

After

	Tested as supplied
Average of last 3 swings SRV	37
Theoretical class as per AS4586:2013	P3
Theoretical class as per AS4586:2004	X



## ADD MORE TO YOUR BUSINESS...



Metal Diamonds for grinding



Resinbond Diamonds for polishing



Soft Brushes for cleaning



Diamond Pads for Floor restoration



## SPARKLING KLEEN PTY LTD

Level 11 65 York St. Sydney 2000 NSW  
 Mob: 0432074463 | Tel: 1300 76 59 06  
 Email: mark@sparklingkleen.com.au  
 Website: www.sparklingkleen.com.au

